

Skyway GTX90 Quick Start Guide.

How to install the Driver and update the speed trap database using the updater.

Please note you may not need a Driver if you have Windows 11 installed.

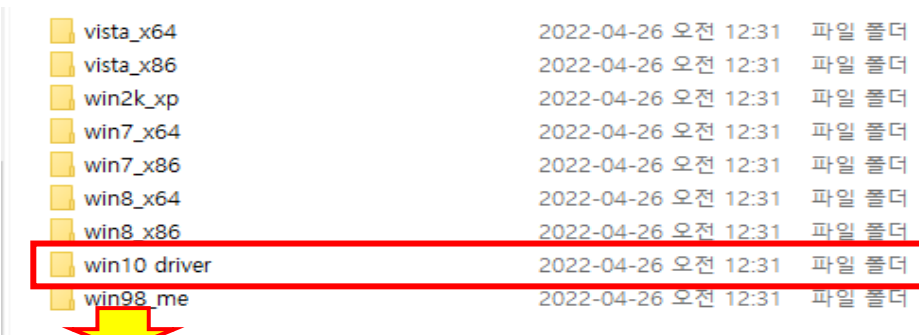
Please refer to the instruction manual provided for further details.

1. Install Driver

Check the Windows SW specifications of your computer and install the correct driver.

E.g. Computer Window Specification : Window 10 Pro (64 bit)

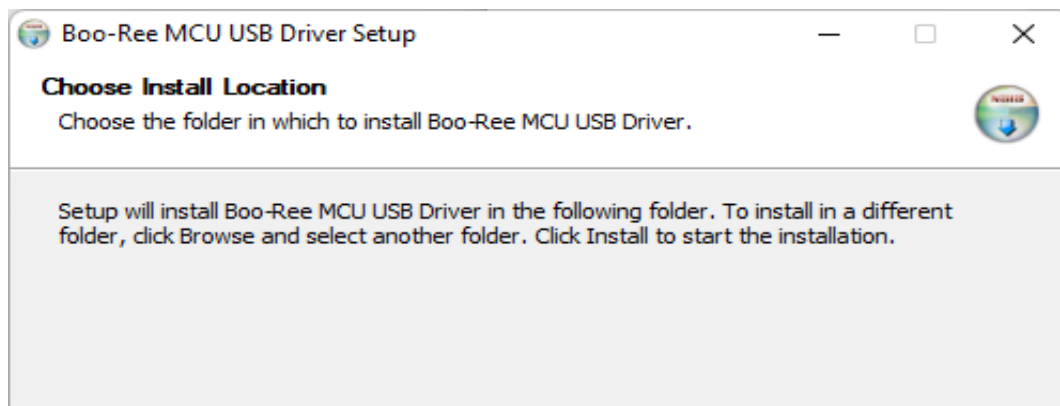
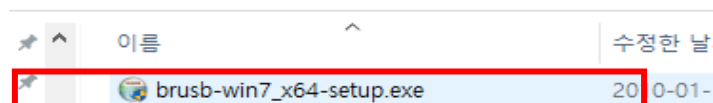
Please choose "Win 10 driver => win10_x64" as below photo.

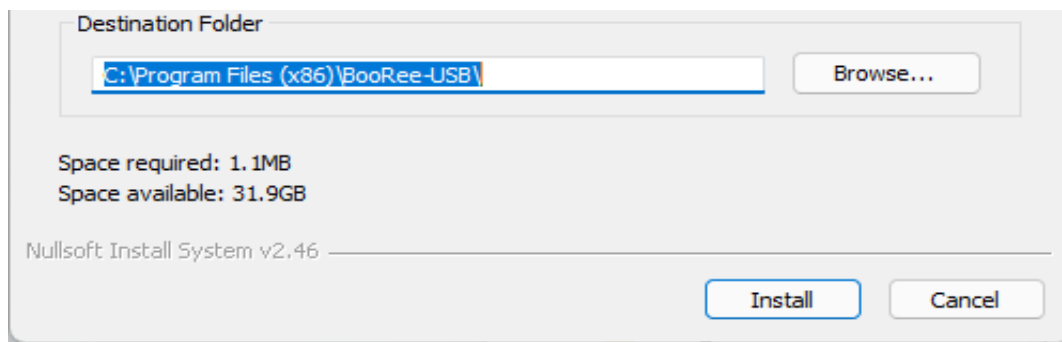


skyway GTX90 updater > Skyway GTX90 Drivers > win10 driver >

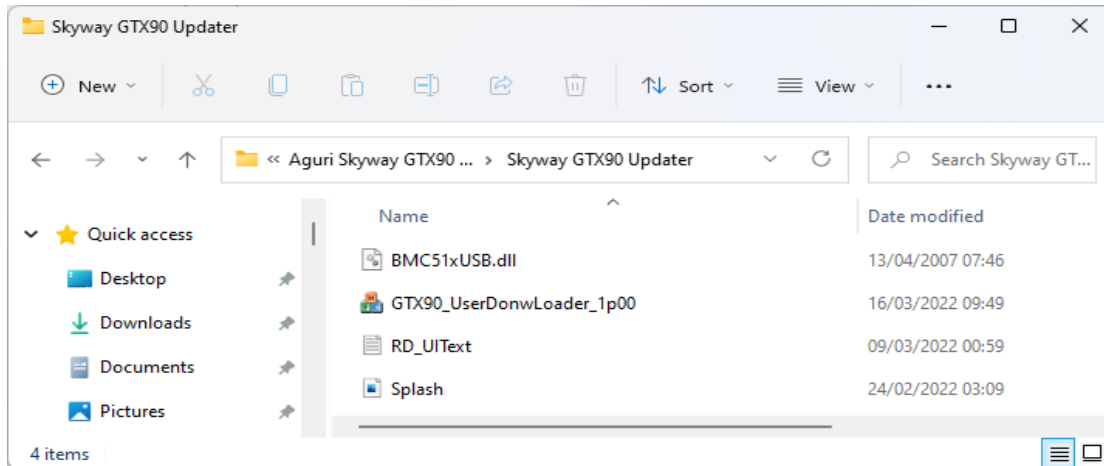


0 Drivers > win10 driver > win10_x64 > installer



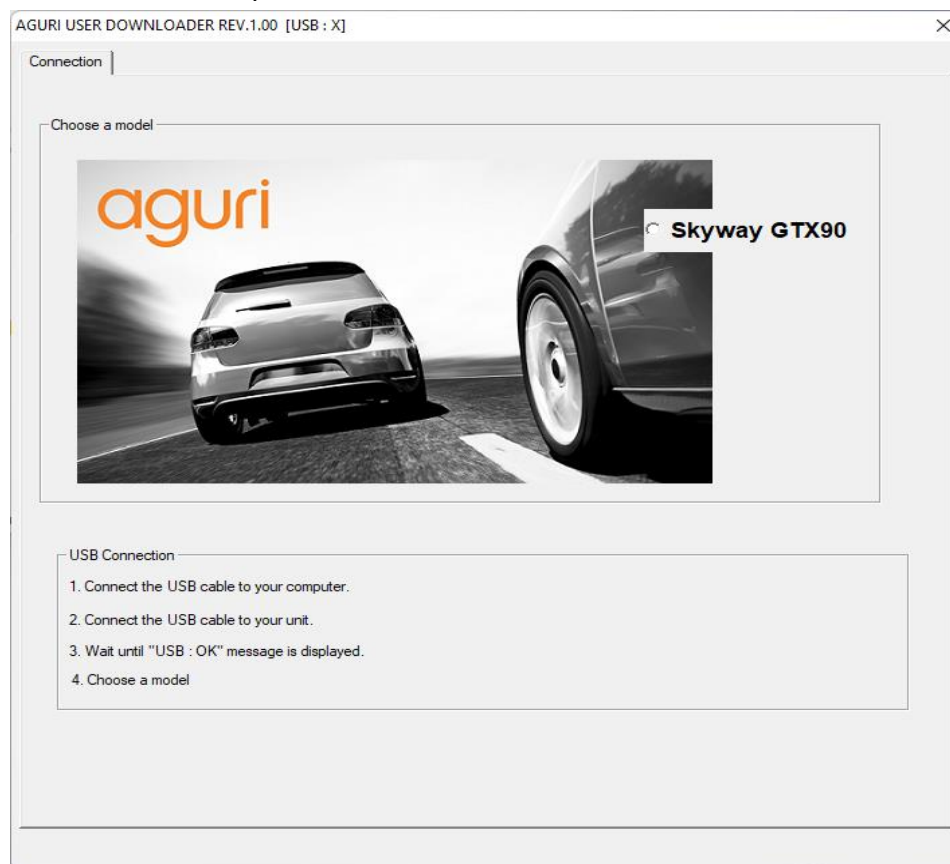


2. Open and run "GTX90_UserDonwLoader_1p00.exe" program

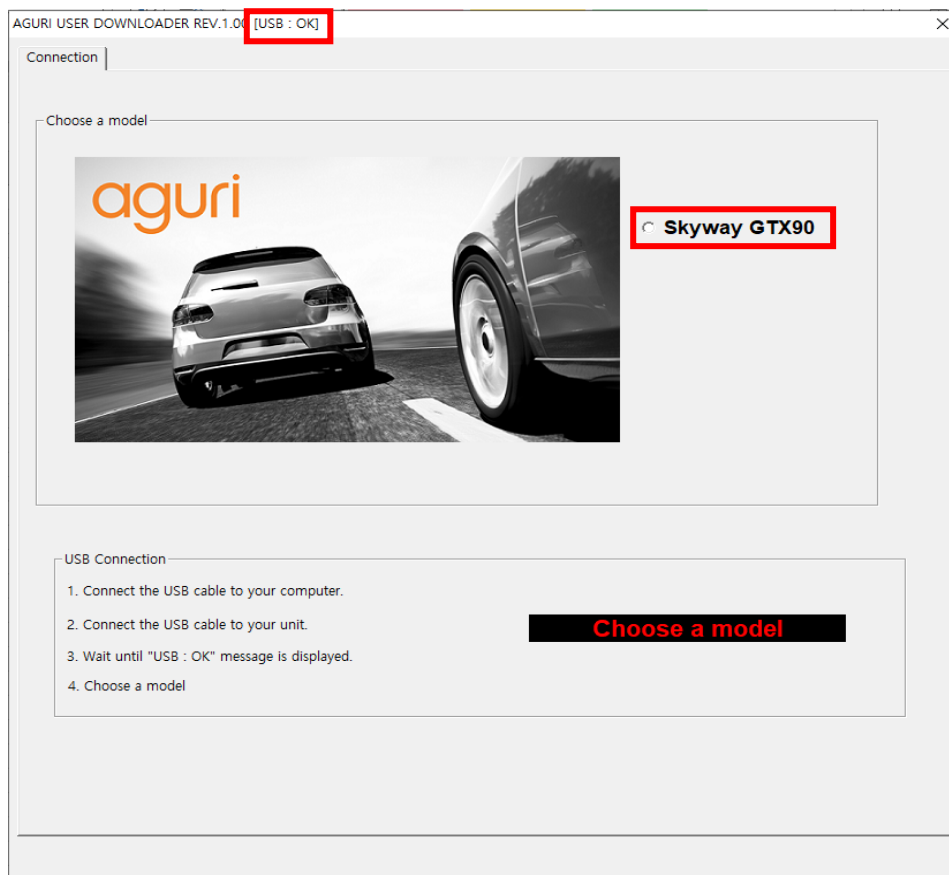


3. Opening connection page

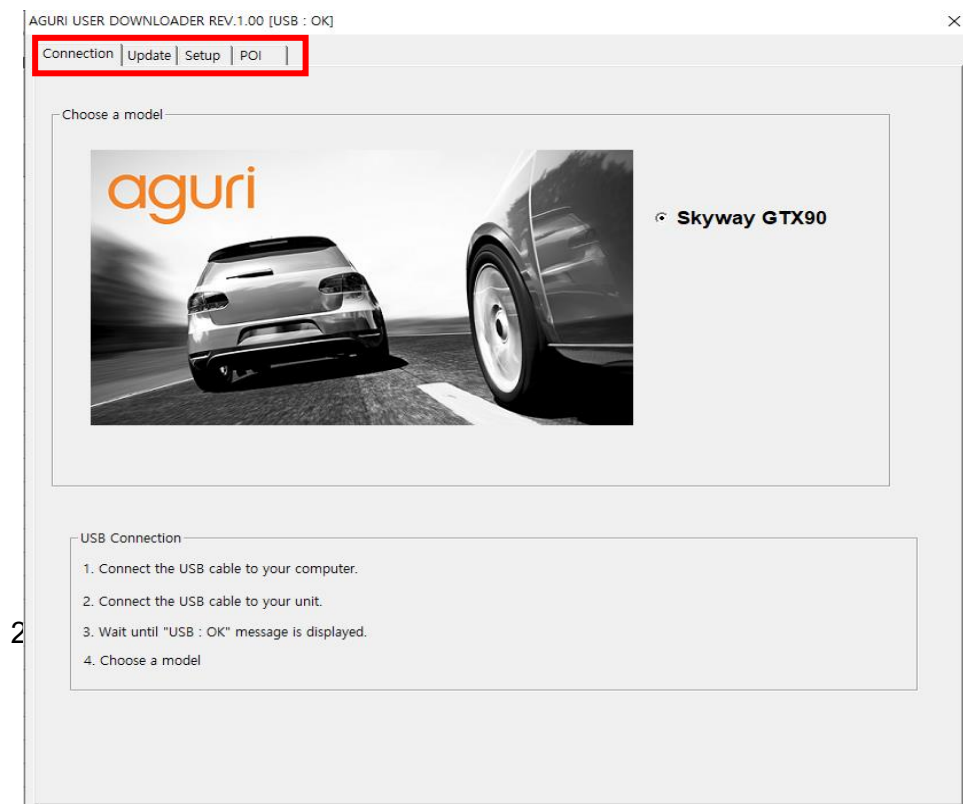
After opening the updater software, connect your Skyway GTX90 to your PC with the USB cable provided.



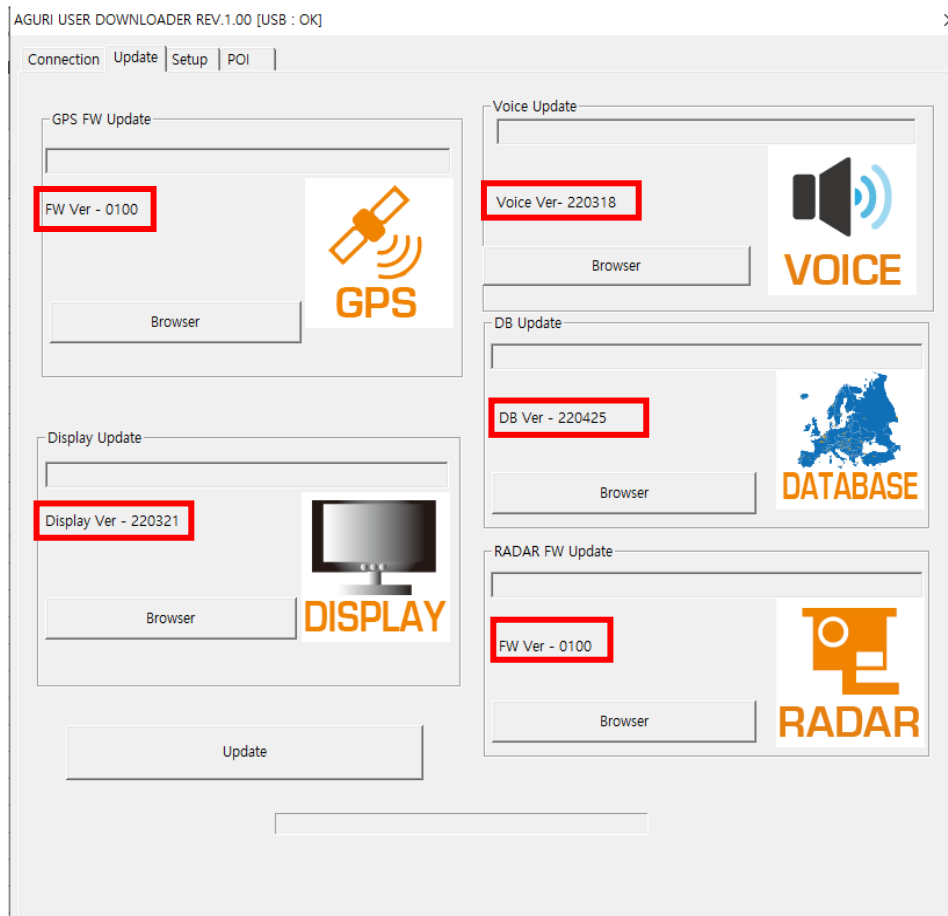
4. Check [USB : OK] and then select Skyway GTX90.



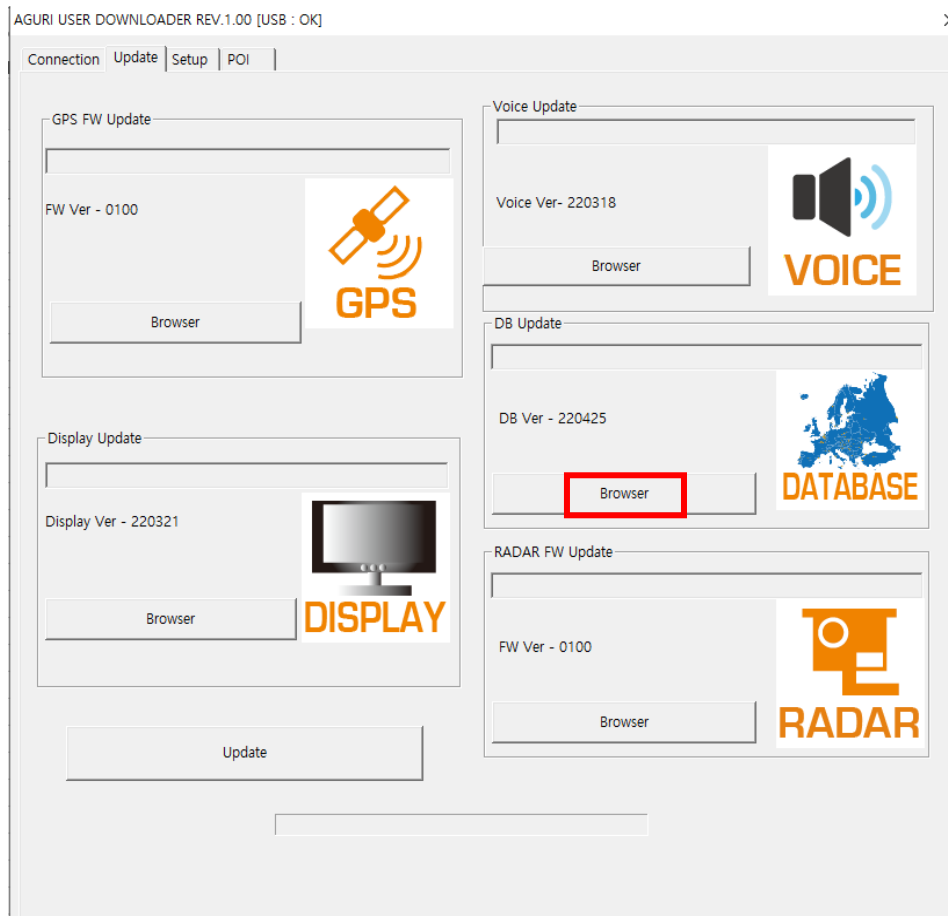
5. After selecting the model number, you will see several new tabs appear as follows.

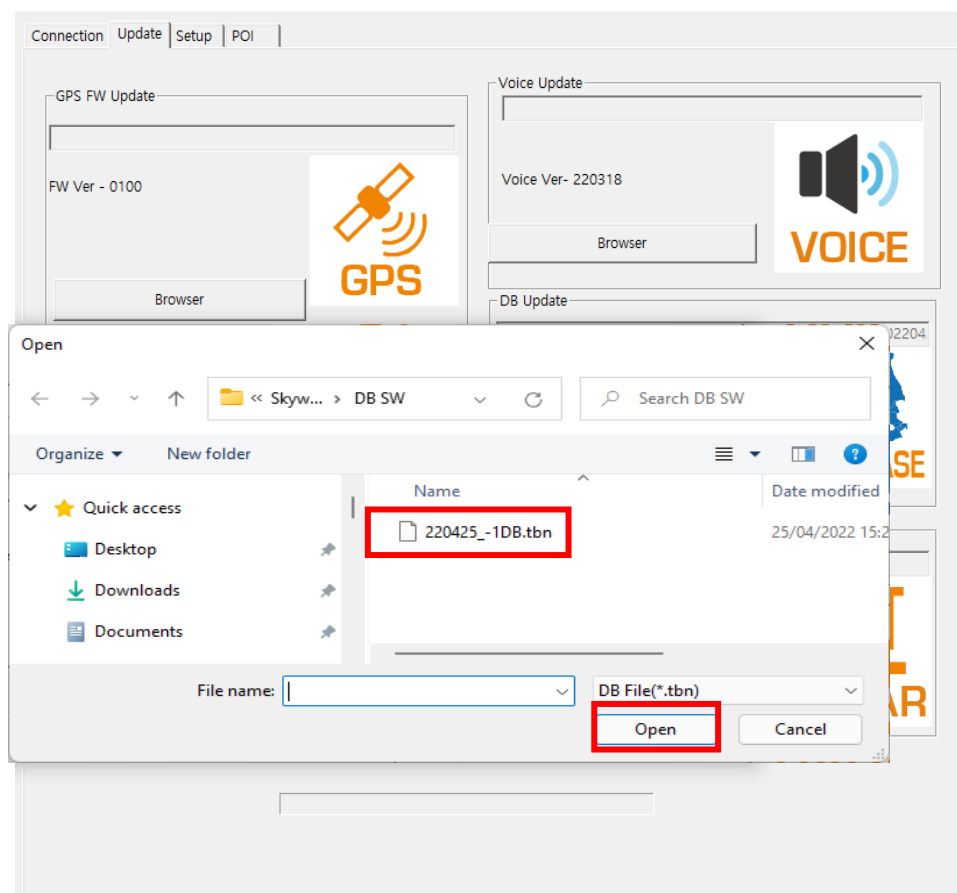


6. Select the Update tab to update the speed trap databaser and software.
The screen will confirm the current versions already installed on your device.



**7. To update the speed trap databaser click Browser, then search and select the DB you have down
If you have not already downloaded and unzipped the database please download it from <https://agu>**

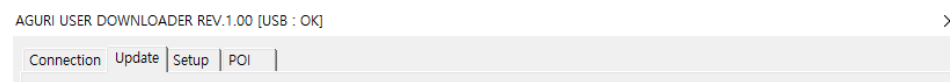


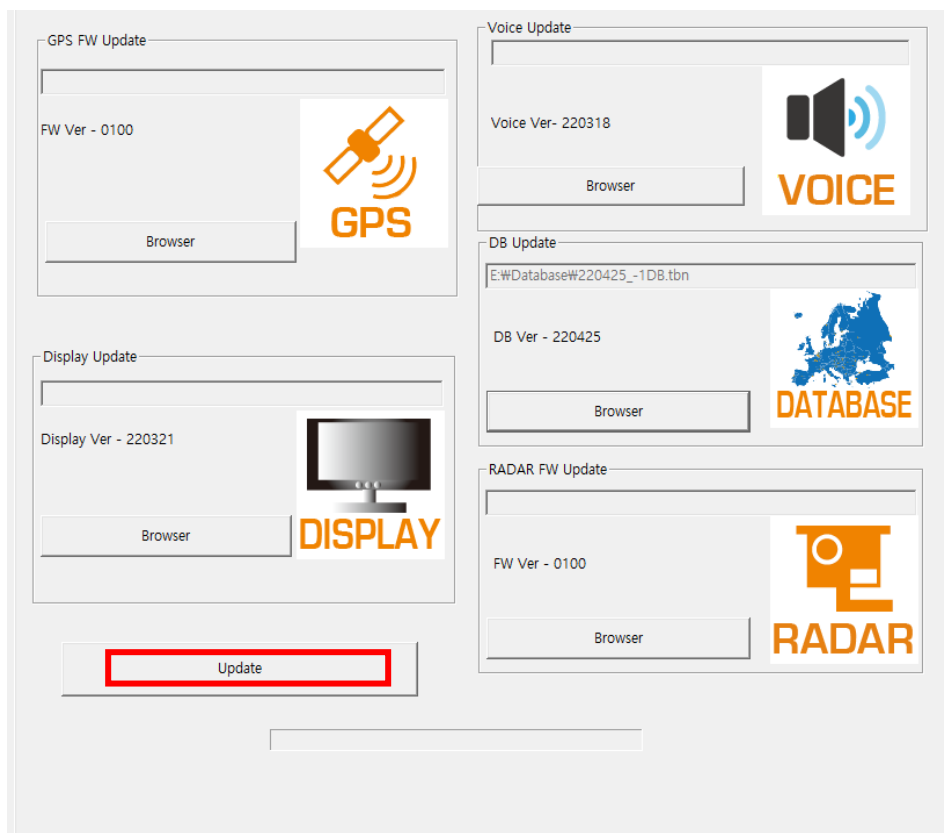


8. Database is ready to install.

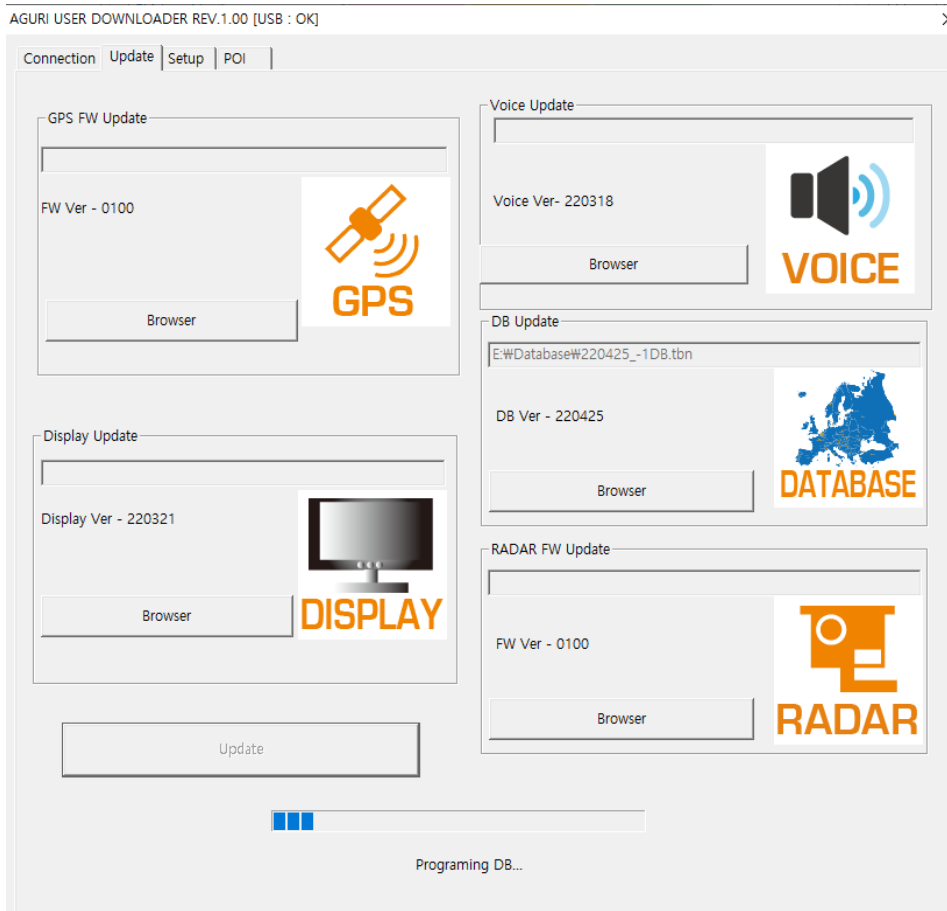


9. Click the "Update" button to install the database.

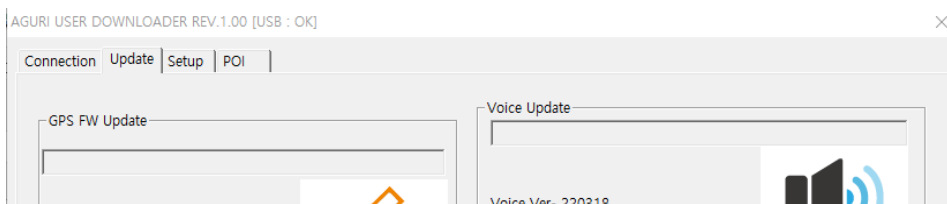


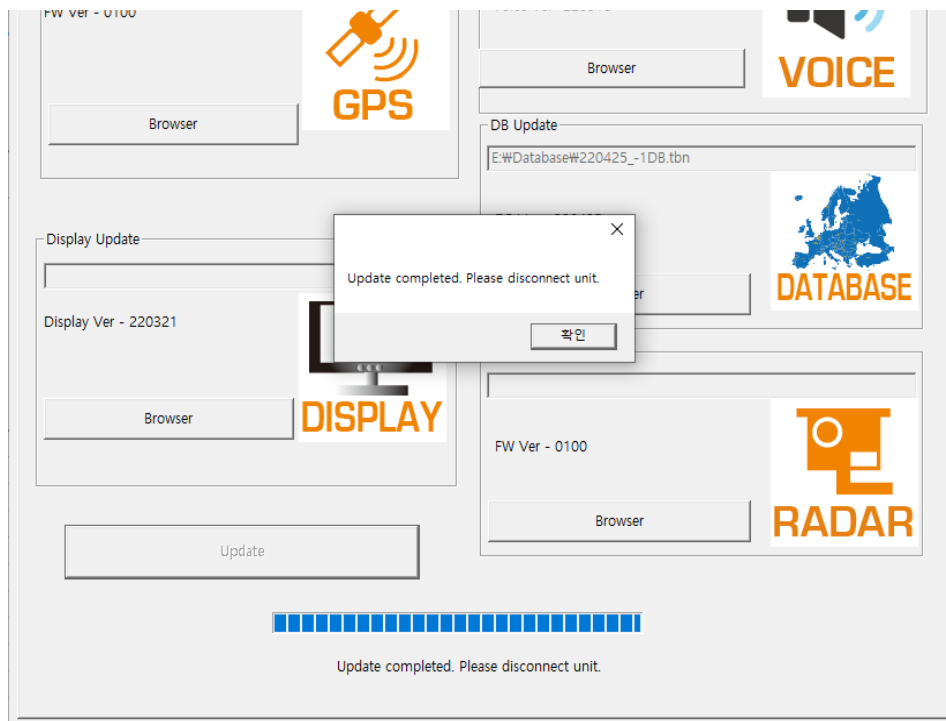


10.The progress bar will confirm the update process.



11. When the update is complete, disconnect your Skyway and close the updater software.





Please refer to the user manual provided for further details.

Click the "View" button to view the "Saved POI" data.

You can also delete the saved POI data through the "Delete" button.

iriworld.co.uk/software-updates/