



DX4000 | Drive Assist

User Manual

www.aguriworld.co.uk

Contents

What's in the box?	3	Drive Assist	
Product overview (front)	4	Speed trap alerts explained	18
Product overview (rear)	5	Mounting the rear camera	20
Settings menu	6	Frequently asked questions	21
Getting started	6	Disposal information	22
Connecting to power	7	Warranty	23
Dash cam operation guide	7		
Power on/off	8		
Volume control	8		
G-Sensor sensitivity	8		
Time stamp	9		
Adjusting brightness of the LCD	9		
Display mode	10		
Status LED setting	11		
Set time and daylight saving	11		
Language setting	12		
Formatting the SD card	12		
GPS speed	12		
Factory reset	13		
System information	13		
Mounting the unit on the dashboard	14		
Drive assist settings	15		
Speed trap & mobile speed trap alerts	15		
Red light camera alert	15		
Vehicle type	16		
Setting vehicle weight	16		
Vehicle trailer	17		

What's in the box?

1 x Aguri DX4000

1 x 12V cigarette lighter charger

1 x 12V hard-wire lead

1 x Suction cup windscreen bracket

1 x Fixed windscreen bracket

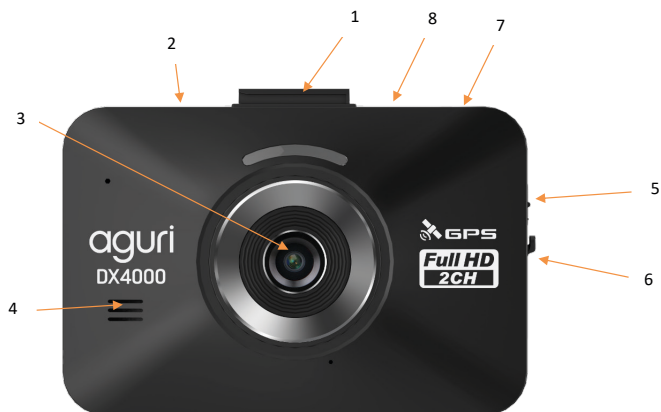
1 x 16GB SD card

1 x User guide

User note. Your Aguri DX4000 is shipped with the latest speed limit and speed trap database pre-installed so it is ready to go straight out of the box!

Warning! Although speed trap detectors are legal to own and use in the UK, they are illegal to use in some other countries of Europe including France, Spain, Switzerland and the Republic of Ireland. We highly recommend switching off all forms of speed trap detection when travelling in these countries and checking local laws when using a dash cam and speed trap detector outside of the UK.

Product overview (Front)



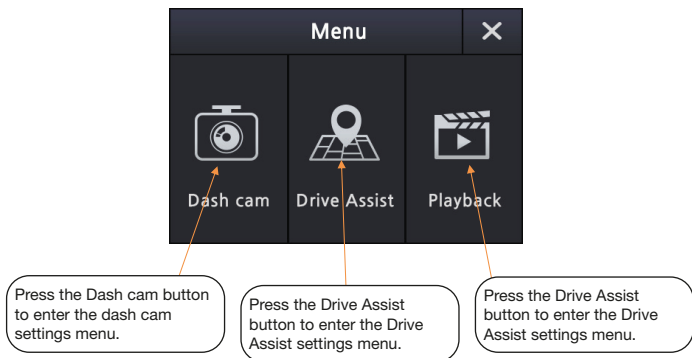
- | | |
|----------------------------------|-----------------------------|
| 1. Windscreen bracket attachment | 5. On/off switch |
| 2. Built-in GPS | 6. SD Card slot |
| 3. Full HD Micro Video Recorder | 7. 12V DC-In socket |
| 4. Loudspeaker | 8. Rear camera input socket |

Product overview (Rear)



- | | |
|--|--|
| 1. Reset button (use paperclip to access and press). | 7. Press to enter settings menu. |
| 2. LED indicator. (Can be turned off in system menu)
Slow flash = Recording.
Fast flash = Recording Event. | 8. Your speed of travel. |
| 3. Time and date provided by GPS. | 9. Type of speed trap detected. |
| 4. Audio indicator on/off. | 10. Speed limit of the road you are travelling on. |
| 5. Microphone indicator on/off. | 11. Compass/direction of travel |
| 6. GPS indicator on/off. | 12. Name or Road number you are travelling on. |

Settings menu



Getting started

If the SD card isn't already installed, please insert the 16GB micro SD card in to the SD card slot on the side of the unit and attach your chosen windscreen bracket to the DX4000 by sliding it in to the interface slot on the top of the unit.

Mount your DX4000 in a safe and convenient position in the front windscreen where it has an unobstructed view of the road ahead but does not obstruct or hinder the driver's view of the road. We recommend mounting your DX4000 at the top of the windscreen near to the rear-view mirror. However, remember that you will need to attach the power cable, so find a position where the power cable can be connected to the vehicle's cigarette lighter socket where it will not obstruct, or become a danger to the driver.

Mounting your DX4000 on the windscreen using the suction cup bracket

Once you have chosen a location, check the windscreen bracket lever is in the unlocked position, press the suction cup bracket to the glass and push the lever to the locked position.

Mounting your DX4000 on the windscreen using the fixed bracket

Thoroughly clean the area of the windscreen where you want to mount your DX4000. Remove the backing from the 3M tape on the rear of the fixed bracket and press it firmly against the glass in your chosen location.

Mounting your DX4000 on the dashboard using the fixed bracket

Thoroughly clean the area of the dashboard where you want to mount your DX4000 with a very small amount of soapy water. Remove the backing from the 3M tape on the rear of the fixed bracket and press it firmly against the dashboard in your chosen location.

Please do not attach your DX4000 to the bracket for 24 hrs to allow the adhesive to go 'off' and form a strong connection with the windscreen or dashboard.

Take care to mount the bracket in the correct location first time. If you attempt to remove the bracket and re-locate it, the adhesive may be damaged and it will not form a strong enough bond with the windscreen or dashboard.

Connecting to power

Attach the small end of the vehicle charger in to the 'DC in' power socket on top of the unit. Plug the other end of the vehicle charger into an appropriate cigarette lighter or 12V/24V socket in your vehicle.

Installation tips

Before mounting your DX4000, clean the area of the windscreen with a good quality glass cleaner to ensure the suction cup makes a good contact. Remember to mount the unit and install the power cable safely in a location where it does not interfere with the driver or the controls of the vehicle.

Although your DX4000 comes as standard with an 16GB micro SD card, it will support up to a 32GB micro SD card if you want to update the card to a larger size. If you do update the SD card, remember to select an SD card which is minimum SDHC Class 6.

It is also possible to 'hard-wire' your DX4000 using the hard-wire cable included which can provide a neater installation. Please contact an auto electrician or your local car dealer if you are not familiar with this type of installation.

Dash Cam operation guide

Your Aguri DX4000 Dash Cam comes with all features set to their optimum settings as standard, however the unit has certain user selectable features you can change to suit your own requirements if you want to.

Power on/off

Switch the Power On/Off switch to the 'On' position and your DX4000 will Power on and start to record automatically as soon as it receives power and will automatically power off when removed from the power source.

Mic on/off

Your DX4000 is set to automatically record all audible sound within the vehicle but this can be switched on or off as necessary.

Soft push the settings 'cog' icon on the standby screen to enter the settings menu followed by the 'Dash Cam' menu button. Tap the setting to switch the Mic on or off.

To save your settings, press the 'return arrow' followed by the 'X' to return to the standby screen. If there is no activity for 60 seconds, your DX4000 will save your setting and return to the standby screen automatically.

Volume control

Soft push the settings 'cog' icon on the standby screen to enter the settings menu followed by the 'Dash Cam' menu button.

Tap on 'Volume' to cycle through the different levels of volume available starting with 'Mute' (no audio output) up to the loudest volume setting of '5'

To save your settings, press the 'return arrow' followed by the 'X' to return to the standby screen. If there is no activity for 60 seconds, your DX4000 will save your setting and return to the standby screen automatically.

G sensor sensitivity

The G sensor is designed to detect an impact or sudden movement such as sharp braking or your vehicle swerving. If the G sensor detects any of these things, the LED indicator will flash quickly and it will automatically save and lock the loop of video it is currently recording so that it is not automatically overwritten when the SD card is full. Follow the instructions below to adjust the sensitivity of the G sensor.

Soft push the settings 'cog' icon on the standby screen to enter the settings menu followed by the 'Dash Cam' menu button. Tap the G sensor setting on the screen to cycle through the different levels of sensitivity from 'Off' up to the most sensitive setting of '5'.

Any video recorded by the front camera that is saved and locked by the G sensor will be found in the 'Event 1' folder on the SD card. If you also have a rear facing camera installed, any video recorded that is saved and locked by the G sensor will be found in the 'Event 2' folder on the SD card.

To save your settings, press the 'return arrow' followed by the 'X' to return to the standby screen. If there is no activity for 60 seconds, your DX4000 will save your setting and return to the standby screen automatically.

Time stamp

Your DX4000 will automatically display the time and date on any video recorded when it is played back on a compatible computer or TV.

Soft push the settings 'cog' icon on the standby screen to enter the settings menu followed by the 'Dash Cam' menu button. Tap the 'Time stamp' setting on the screen to turn this feature on or off.

To save your settings, press the 'return arrow' followed by the 'X' to return to the standby screen. If there is no activity for 60 seconds, your DX4000 will save your setting and return to the standby screen automatically.

REC.option - Record option

There are two record options to choose from.

NOR/Normal – The DX4000 will record in 1 minute loops and all recordings will be saved in to the Infinite folder on the SD card.

NOR+EVT/Normal + Event – The DX4000 will record in 1 minute loops but if the G sensor senses an incident such as a sudden impact or movement, the section of the recording effected, will be saved in to the Event folder on the SD card.

Soft push the settings 'cog' icon on the standby screen to enter the settings menu followed by the 'Dash Cam' menu button and the 'Down' arrow. Tap 'Rec.option' on the screen to switch between Normal or Normal + Event.

To save your settings, press the 'return arrow' followed by the 'X' to return to the standby screen. If there is no activity for 60 seconds, your DX4000 will save your setting and return to the standby screen automatically.

Please note we recommend the Normal + Event setting to so that any events recorded are saved and locked, so that they will not be automatically recorded over once the SD card is full.

Adjusting the brightness of the LCD brightness

Soft push the settings 'cog' icon on the standby screen to enter the settings menu followed by the 'Dash Cam' menu button and then the 'Down' arrow. Tap the 'LCD Brightness' setting to cycle through the three different brightness levels available – Bright, Dark or Normal.

To save your settings, press the 'return arrow' followed by the 'X' to return to the standby screen. If there is no activity for 60 seconds, your DX4000 will save your setting and return to the standby screen automatically.

AUTO brightness

Your DX4000 can be set so that the LCD brightness automatically changes as the light conditions get brighter or darker.

Soft push the settings 'cog' icon on the standby screen to enter the settings menu followed by the 'Dash Cam' menu button and the 'Down' arrow. Tap 'Auto brightness' on the screen to switch the feature on or off.

To save your settings, press the 'return arrow' followed by the 'X' to return to the standby screen. If there is no activity for 60 seconds, your DX4000 will save your setting and return to the standby screen automatically.

Lcd Auto Off

The LCD can be set to stay on all the time or to automatically switch off after 1 minute or 30 seconds. Follow the instructions below to set-up the Lcd Auto Off feature.

Soft push the settings 'cog' icon on the standby screen to enter the settings menu followed by the 'Dash Cam' menu button and then the 'Down' arrow button. Tap 'Lcd Auto Off' on the screen to cycle through the options and make your selection.

If you set the feature so that the LCD automatically switches off, it will automatically switch back on again whenever you approach a speed trap and the speed trap alert commences. It will also come on for a short period if you have set the unit to alert when you exceed a speed limit or if you have set the unit to alert when the speed limit changes.

To save your settings, press the 'return arrow' followed by the 'X' to return to the standby screen. If there is no activity for 60 seconds, your DX4000 will save your setting and return to the standby screen automatically.

Display mode

You can choose between two different display modes. 'Cam' provides a combined screen that shows what the device is recording as well as the Drive Assist speed limit and speed trap detection software. 'Assist' shows the Drive Assist speed limit and speed trap detection software only whilst the unit continues to record in the background. Follow the instructions below to set-up the Display mode.

Soft push the settings 'cog' icon on the standby screen to enter the settings menu followed by the 'Dash Cam' menu button and the 'Down' arrow button until you see 'Display mode'. Tap the 'Display mode' setting on the screen to cycle through the options and make your selection.

To save your settings, press the 'return arrow' followed by the 'X' to return to the standby screen. If there is no activity for 60 seconds, your DX4000 will save your setting and return to the standby screen automatically.

In screen view (Rear facing camera required)

The In screen view function enables you to select which camera view appears on the standby screen.

Soft push the settings 'cog' icon on the standby screen to enter the settings menu followed by the 'Dash Cam' menu button and the 'Down' arrow button until you see 'In screen view'.

Tap the 'In screen view' setting on the screen to cycle through the options – Front (Front camera only), Rear (Rear camera only) and F+R (Front and rear camera).

To save your settings, press the 'return arrow' followed by the 'X' to return to the standby screen. If there is no activity for 60 seconds, your DX4000 will save your setting and return to the standby screen automatically.

Please note that this feature will only work if you have a rear camera connected. Please visit www.aguriworld.co.uk or call 0330 102 5578 if you would like to purchase a rear facing camera for your DX4000.

Speed unit

You can set your DX4000 to display speed limits and your speed in either MPH or KMH.

Soft push the settings 'cog' icon on the standby screen to enter the settings menu followed by the 'Dash Cam' menu button and the 'Down' arrow button until you see 'Speed unit'. Tap the 'Speed unit' setting on the screen to switch between the two options.

To save your settings, press the 'return arrow' followed by the 'X' to return to the standby screen. If there is no activity for 60 seconds, your DX4000 will save your setting and return to the standby screen automatically.

Status LED setting

The status LED indicates whether the unit is powered on or off and flashes when the unit is recording. It can be switched on or off as necessary.

Soft push the settings 'cog' icon on the standby screen to enter the settings menu followed by the 'Dash Cam' menu button and the 'Down' arrow button until you see 'Status LED'. Tap the 'Status LED' setting to switch the status LED on or off as required.

To save your settings, press the 'return arrow' followed by the 'X' to return to the standby screen. If there is no activity for 60 seconds, your DX4000 will save your setting and return to the standby screen automatically.

Set Time and Daylight saving mode

The date and time is automatically set by GPS so you do not need to set this yourself but you can also adjust the time between GMT and Daylight saving as necessary.

Soft push the settings 'cog' icon on the standby screen to enter the settings menu followed by the 'Dash Cam' menu button and the 'Down' arrow button until you see 'Set Time' and 'Daylight Saving'. Tap the 'Daylight Saving' feature on the screen to switch between GMT and Daylight Saving depending on the time of year.

To save your settings, press the 'return arrow' followed by the 'X' to return to the standby screen. If there is no activity for 60 seconds, your DX4000 will save your setting and return to the standby screen automatically.

Language setting

Soft push the settings 'cog' icon on the standby screen to enter the settings menu followed by the 'Dash Cam' menu button and the 'Down' arrow button until you see 'Language'.

Tap the 'Language' feature on the screen to cycle through the different language options available.

To save your settings, press the 'return arrow' followed by the 'X' to return to the standby screen. If there is no activity for 60 seconds, your DX4000 will save your setting and return to the standby screen automatically.

Calibrate touch screen

It may be necessary to re-calibrate the touch screen from time to time. Follow the instructions below to calibrate the screen.

Soft push the settings 'cog' icon on the standby screen to enter the settings menu followed by the 'Dash Cam' menu button and the 'Down' arrow button until you see 'Touch Cal'. Tap the 'Touch Cal' feature on the screen to start to the calibration process and tap the cross as precisely as possible, wherever it appears on the LCD. The more accurately you press the cross, the more accurate the touch screen will be.

To exit the menu, press the 'return arrow' followed by the 'X' to return to the standby screen. If there is no activity for 60 seconds, your DX4000 will save your setting and return to the standby screen automatically.

Formatting the SD card

To help extend the life of the SD card, we recommend formatting the SD card approximately once every three months. You should also format any new SD cards before using them.

Soft push the settings 'cog' icon on the standby screen to enter the settings menu followed by the 'Dash Cam' menu button and the 'Down' arrow until you see 'SD format'. Tap on 'SD format' and then 'OK' to start the process followed by 'Confirm' to format the card.

To exit, press 'Cancel' or the 'return arrow' followed by the 'X' to return to the standby screen. If there is no activity for 60 seconds, your DX4000 will save your setting and return to the standby screen automatically.

Please note that the entire contents of the SD card will be deleted during the format process. Please transfer any video content you wish to keep to your computer before formatting the SD card.

GPS speed

The speed displayed on the DX4000 may not exactly match the speed displayed on your speedometer depending on the make and manufacturer of your vehicle. Use this feature to fine-tune the GPS speed displayed.

Soft push the settings 'cog' icon on the standby screen to enter the settings menu followed by the 'Dash Cam' menu button and the 'Down' arrow until you see 'GPS speed'. Tap on 'GPS speed' and use the up or down arrows to adjust the speed reading as necessary. Press the 'Confirm' button to save your setting and return to the menu.

To exit the feature at any time, press 'Cancel' or the 'return arrow' followed by the 'X' to return to the standby screen. If there is no activity for 60 seconds, your DX4000 will save your setting and return to the standby screen automatically.

Reset system/factory reset

Use this feature if you want to reset your DX4000 and return it to its original factory settings.

Soft push the settings 'cog' icon on the standby screen to enter the settings menu followed by the 'Dash Cam' menu button and the 'Down' arrow button until you see 'Reset system'. Tap 'OK' followed by 'Confirm' and then tap 'Confirm' again if you are sure you want to proceed and fully reset the system.

To exit, press 'Cancel' or the 'return arrow' followed by the 'X' and return to the standby screen. If there is no activity for 60 seconds, your DX4000 will save your setting and return to the standby screen automatically.

System information

Soft push the settings 'cog' icon on the standby screen to enter the settings menu followed by the 'Dash Cam' menu button and the 'Down' arrow button until you see 'Information'.

Tap the 'Information' setting on the screen to check the version of software and databases currently installed on your DX4000.

To exit this setting, press the 'return arrow' followed by the 'X' and return to the standby screen. If there is no activity for 60 seconds, your DX4000 will save your setting and return to the standby screen automatically.

Inverting the LCD and mounting the unit on the dashboard

It is possible to invert the LCD to enable you to mount the unit upside down. This would be necessary if you wanted to mount the unit on the dashboard rather than the windscreen for example.

To invert the LCD view, simply power the unit on whilst holding it upside down. If you want to switch it back again, power it off and back on again whilst holding it the normal way up

Mounting the unit on the dashboard

Thoroughly clean the area of the dashboard where you want to mount your DX4000 with a very small amount of soapy water. Remove the backing from the 3M tape on the rear of the fixed bracket and press it firmly against the dashboard in your chosen location.

Take care to mount the bracket in the correct location first time. If you attempt to remove the bracket and re-locate it, the adhesive may be damaged and it will not form a strong enough bond with the dashboard.

Please do not attach your DX4000 to the bracket for 24 hrs to allow the adhesive to go 'off' and form a strong connection with the dashboard.

Playing back video footage on your computer

Remove the SD card from the DX4000 and insert into a compatible SD card slot on your computer using the SD card adaptor supplied. Go to 'File Explorer' (or similar) on your computer and click on the SD card that should now appear in the list of contents displayed on the left hand side of the window.

Infinite folder. Double left click this folder to open and you will see two more folders, '1' and '2'. Folder '1' will contain all footage recorded by the forward facing camera built in to the DX4000. Folder '2' will contain all footage recorded by the rear facing camera if you have one installed.

Event folder. Double left click this folder to open and you will see two more folders, '1' and '2'. Folder '1' will contain all footage recorded by the forward facing camera built in to the DX4000 that has been locked and saved by the G sensor. Folder '2' will contain all footage recorded by the rear facing camera, that has been locked and saved, if you have one installed.

Please note the Capture folder is not used.

Playing back video footage on the DX4000

Tap the 'Cog' settings icon on the standby screen to enter the main menu followed by the 'Playback' button. Tap on 'Normal' or 'Event' depending on the video footage you want to watch.

Next, select between video recorded by the front or rear camera (Please note you will only find video recorded in the 'Rear' folder if you have the rear camera installed).

Use the up and down arrows to scroll through the video recorded and tap on any footage you want to playback.

Drive Assist settings

Smart mute

When Smart Mute is switched on, you will only receive audible speed trap alerts when you are travelling above the posted speed limit. Smart Mute can be turned off and on as follows:-Soft push the settings 'cog' icon on the standby screen followed by the 'Drive Assist' menu button to enter the 'Drive Assist' settings menu. Tap the 'Smart mute' setting on the screen to switch it off or on.

To save your setting, press the 'return arrow' followed by the 'X' to return to the standby screen. If there is no activity for 60 seconds, your DX4000 will save your setting and return to the standby screen automatically.

Speed trap alerts

You can use this setting to switch 'fixed' speed trap alerts on or off.

Soft push the settings 'cog' icon on the standby screen followed by the 'Drive Assist' menu button to enter the 'Drive Assist' settings menu. Tap the 'Speed trap alerts' setting on the screen to switch it on or off.

To save your setting, press the 'return arrow' followed by the 'X' to return to the standby screen. If there is no activity for 60 seconds, your DX4000 will save your setting and return to the standby screen automatically.

Mobile speed trap alerts

You can use this setting to switch 'mobile' speed trap alerts on or off.

Soft push the settings 'cog' icon on the standby screen followed by the 'Drive Assist' menu button to enter the 'Drive Assist' settings menu. Tap the 'Mobile speed trap alerts' setting on the screen to switch it on or off.

To save your setting, press the 'return arrow' followed by the 'X' to return to the standby screen. If there is no activity for 60 seconds, your DX4000 will save your setting and return to the standby screen automatically.

Red light camera alerts

You can use this setting to switch Red light camera alerts on or off.

Soft push the settings 'cog' icon on the standby screen followed by the 'Drive Assist' menu button to enter the 'Drive Assist' settings menu. Tap the 'Red light camera alerts' setting on the screen to switch it on or off.

To save your setting, press the 'return arrow' followed by the 'X' to return to the standby screen. If there is no activity for 60 seconds, your DX4000 will save your setting and return to the standby screen automatically.

How to set the unit to alert when the speed limit changes

Your DX4000 can be set to alert when you drive from one speed limit zone to another.

Soft push the settings 'cog' icon on the standby screen followed by the 'Drive Assist' menu button to enter the 'Drive Assist' settings menu. Tap the 'Down arrow' button until you see 'Speed limit change'. Tap on the 'Speed limit change' setting to switch the feature on or off as required.

To save your setting, press the 'return arrow' followed by the 'X' to return to the standby screen. If there is no activity for 60 seconds, your DX4000 will save your setting and return to the standby screen automatically.

How to set the unit to alert when you exceed the speed limit

You can set your DX4000 to alert you when you exceed the speed limit by a pre-set amount, starting from 1mph and increasing in 1mph increments. For example, set the numeric value to '1' and the unit will alert you when you exceed the posted speed limit by 1mph, set the numeric value to '2' and the unit will alert you when you are 2mph over the speed limit and so on.

Soft push the settings 'cog' icon on the standby screen followed by the 'Drive Assist' menu button to enter the 'Drive Assist' settings menu. Tap the 'Down arrow' button until you see 'User speed warning'. Tap 'User speed warning' on the screen to adjust the numeric value as required.

To save your setting, press the 'return arrow' followed by the 'X' to return to the standby screen. If there is no activity for 60 seconds, your DX4000 will save your setting and return to the standby screen automatically.

Vehicle type

The DX4000 can be set to display the correct speed limit depending on the type of vehicle you are driving.

Soft push the settings 'cog' icon on the standby screen followed by the 'Drive Assist' menu button to enter the 'Drive Assist' settings menu. Tap the 'Down arrow' button until you see 'Vehicle type'. Choose between Car, Truck & Van, Motorhome, Caravan and Bus/Coach. Tap on the vehicle required and then press the 'return arrow' to save your setting followed by the 'X' to return to the standby screen.

If there is no activity for 60 seconds, your DX4000 will save your setting and return to the standby screen automatically.

Please note you that if you change the vehicle type from car to Truck & Van, Motorhome, Caravan or Bus/Coach, you must then enter the weight for the vehicle in order for the DX4000 to display the correct speed limits.

Setting vehicle weight

Soft push the settings 'cog' icon on the standby screen followed by the 'Drive Assist' menu button to enter the 'Drive Assist' settings menu. Tap the 'Down arrow' button until you see 'Vehicle weight' and tap to select it. Use the up and down arrows to enter the weight required and tap 'Confirm' to save your settings.

Press the 'return arrow' followed by the 'X' to return to the standby screen.

If there is no activity for 60 seconds, your DX4000 will save your setting and return to the standby screen automatically.

Vehicle trailer

The DX4000 can be set to display the correct speed limits if you are towing a trailer.

Soft push the settings 'cog' icon on the standby screen followed by the 'Drive Assist' menu button to enter the 'Drive Assist' settings menu. Tap the 'Down arrow' button until you see 'Vehicle trailer'. Tap on 'Vehicle trailer' on the screen to switch this setting on and off as required.

To save your setting, press the 'return arrow' followed by the 'X' to return to the standby screen. If there is no activity for 60 seconds, your DX4000 will save your setting and return to the standby screen automatically.

Please note the 'Vehicle trailer' option is only available when 'Car' is selected as your 'Vehicle type'. The 'Vehicle trailer' option is not required for the other vehicle options as the speed limits have already been adjusted according to the vehicle type. For example, if you have selected 'Caravan' as your vehicle type, the unit already knows that you are towing.

Drive Assist speed trap alerts explained

Fixed speed camera alert



Your speed

Fixed speed trap alert graphic will indicate you are approaching a speed trap such as a Gatso, Truvello or DS2 speed camera.

Speed limit of the road you are travelling on

Average speed camera alert



Your speed

Average speed trap alert graphic.

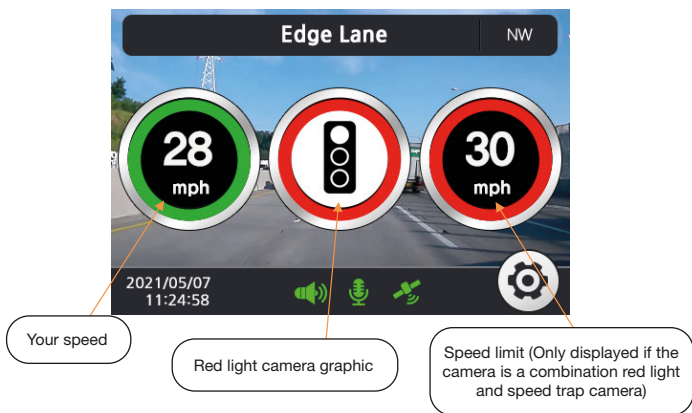
Your average speed

Speed limit of the road you are travelling on

Mobile speed trap/high risk zone alert



Red light camera alert



Rear facing camera (available to purchase separately at www.aguriworld.co.uk)

How to mount the rear facing camera

Mount your DX4000 rear camera in a safe and convenient position in the rear screen where it has an unobstructed view of the road but does not obstruct or hinder the driver's view. We recommend mounting the rear camera at the top of screen to give it the best view.

The video/power cable then needs to be run from the rear of the vehicle to the front where the DX4000 is mounted and plugged in to the 2CH-IN socket. For a neater installation, the cable should be run under the roof's headliner, however, if you are not familiar with this type of procedure, we strongly recommend you contact your local auto electrician or car dealer.

Mounting the rear camera on the screen using the fixed bracket

Once you have decided on the best location for the rear facing camera mount it on the screen using the 3M tape supplied. Thoroughly clean the area of the screen where you want to mount the camera. Remove the backing from the 3M tape on the rear of the bracket and press it firmly against the glass in your chosen location.

Installation warnings!

Please contact your local auto electrician or car dealer if you are unfamiliar with this type of installation.

Please check that the rear facing camera powers up and records to the DX4000 before final installation.

Ensure that the camera does not interfere with the driver's view and that the video/power cable is safely secured and is not a danger to the driver or passengers and does not hinder the driver or any of the vehicle's controls in any way.

Take care to mount the rear camera in the correct location first time. If you attempt to remove the bracket and re-locate it, the adhesive may be damaged and it will not form a strong enough bond with the windscreen or dashboard.

Please do not attach the video/power cable to the rear camera for 24 hrs to allow the adhesive to go 'off' and form a strong connection with the screen

How to update your Aguri DX4000 Drive Assist

Your DX4000 has been delivered with the most up-to-date information already installed. However, it is possible to update the speed trap database and speed limit information when a new database is released, as well the System software if or when any software improvements are made.

Visit our website www.aguriworld.co.uk and go to the 'Software updates' section of the website or use the 'Search' box that can be found to the top right-hand corner of the screen to search for 'DX4000 updates'. A list of the most recent updates will be displayed and will include the following depending on what updates have been released:-

Drive Assist application software : "update_app.zip"

Speed trap database update : "update_warn.zip"

Speed limit database : "DX4000_VX.X.X.XX_STORAGE.bin"

It won't always be necessary to update everything so only update any data that is more recent than that displayed on the 'Information' screen found in the Dash cam settings menu or recommended on our website or Social media channels. Once you have determined what needs updating, download the 'zipped' folder to your computer and unzip the folder using appropriate 'Zip' software. If you don't already have any 'Zip' software, there are many free versions available online, such as www.7zip.org

Next, remove the SD card from the DX4000 and insert it into your computer using the SD card adaptor supplied. Go to 'File explorer' to locate the SD card and double click it to open it so you can see its contents. Next, drag, or copy and paste the contents of the unzipped folder, onto the SD card, then remove it from your computer and re-insert it into your DX4000. Finally, power on the DX4000 and wait while it automatically updates itself. A message will appear on the screen, advising you of its progress. Once the update has been successfully installed, the LCD will revert to the normal 'standby' screen and your DX4000 will be ready to use again, or ready for the next update if more than one has been released.

User note. If there are several updates available, repeat the process above and install them one at a time, starting with the Drive Assist application software, then the Speed limit database, followed by the Speed trap database update.

Please visit the FAQ section of our website www.aguriworld.co.uk or use the 'Search' feature of our website to search for 'DX4000 updates' for more information regarding when and how to update your unit.

Follow us on Facebook or Instagram to get alerts of when the next updates will be released!

Frequently asked questions

The LCD is upside down, how do I change it?

It is possible to invert the LCD to enable you to mount the unit upside down. This would be necessary if you wanted to mount the unit on the dashboard rather than the windscreen for example.

If you find the LCD is upside down you may have inverted it accidentally.

To invert the LCD view, simply power the unit on whilst holding it upside down. If you want to switch it back again, power it off and back on again whilst holding it the normal way up.

If you have any questions or need advice about using this product, please call 0330 102 5578 or contact us via Live Chat on our website www.aguriworld.co.uk

Disposal of Old Electrical & Electronic Equipment - applicable in the European Union.



If you see this symbol on a product or its packaging, it indicates that the product should not be treated as normal household waste. If you see this symbol on any product or packaging it should be handed over to an applicable collection point for the recycling of electrical equipment.

By ensuring that this product is disposed of correctly you will help prevent a potentially negative impact on the environment. In addition the recycling of materials will help to conserve natural resources. For further

information about recycling please contact your local civic office or recycling centre.

Warranty

Please note that to receive technical support or service under warranty, you must first register your unit at www.aguriworld.co.uk

Having a problem with your Aguri Speed Vision Aguri dash cam DVR?

Try visiting the FAQ section at **www.aguriworld.co.uk**. We find that most issues can be resolved there.

If you are still experiencing problems, your Aguri Speed Vision Aguri dash cam DVR comes with a standard 12 month warranty. To return your unit under warranty please ship it in suitable protective packaging, using Special Delivery or an alternative insured delivery service to:-

Warranty Department

Aguri Limited
Unit 8 Guinness Road
Trafford Park
Manchester
M17 1SD

Please enclose the following information:

- (a) Your name, address and a full description of the problem.
- (b) A telephone number where you can be reached during business hours.
- (c) Your units' serial number.
- (d) A copy of your proof of purchase.

Please note that the warranty will be considered void if the product:

Has been dropped or otherwise obviously mistreated.

Has been subjected to heat, moisture or damp conditions.

Has been opened or dismantled.

Has been charged or powered with any cable or charger other than the one supplied.

aguri

www.aguriworld.co.uk