

aguri

SPEEDVISION

DX20 DVR

User Manual

www.aguriworld.co.uk

Contents

What's in the box?	3	Set LCD backlight on/off	14
Product overview	3	Format SD card	15
DVR LCD overview	4	Set voice on or off.	16
Installation	5	Over speed reminder	16
Connecting to power	5	Set speed units	17
Basic features	6	Set speed trap alerts	17
Video playback	8	Set red light camera alerts	18
Aguri Viewbox PC software	9	Set mobile speed trap alerts	18
Video recording settings	10	Park mode	18
Setting G-Sensor	12	Camera operation	19
Change language	13	Updating the speed trap database and unit software	20
Set volume	13	Technical specification	21
Set time	13	Disposal of Old Electrical & Electronic Equipment	22
Adjust touch tone	14	Service under warranty	23

Copyright

Copyright ©2016 Aguri Limited. All rights reserved.

Product specifications and features are for reference only and are subject to change without prior notice.

Declaration

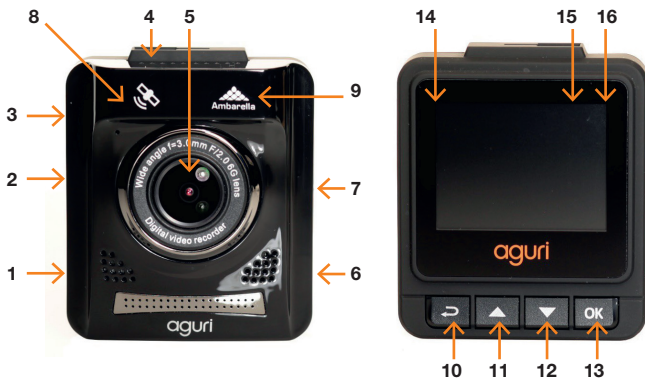
This User Manual is published by Aguri Limited without any warranty. Improvement and changes to this User Manual necessitated by typographical errors, inaccuracies of current information, or improvements to programs and/or equipment, may be made by Aguri Limited any time and without notice. Such changes will, however, be incorporated into new editions of this User Manual.

What's in the box?

- 1 x Aguri Speed Vision DX20 DVR
- 1 x USB cable
- 1 x Vehicle charger
- 1 x Windscreen bracket
- 1 x User guide



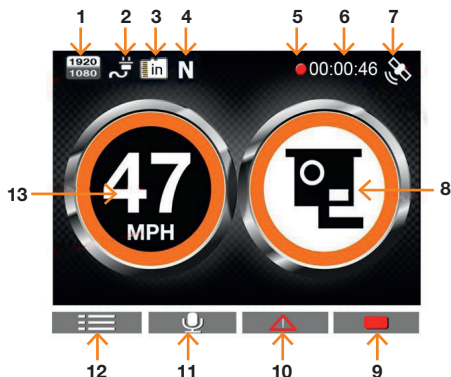
Product Overview



- 1. Reset
- 2. HDMI out socket
- 3. USB data/power socket
- 4. Windscreen bracket slot
- 5. Video/Camera Lens
- 6. SD card slot
- 7. Power on/off button
- 8. Built-in Antenna
- 9. Ambarella processor
- 10. Menu/Return button
- 11. Video Playback/Up/Mute button
- 12. Camera/Down/SOS button
- 13. Video Record/OK button
- 14. 2" Full colour LCD
- 15. Red LED power/charging indicator
- 16. Blue LED video recording indicator

DVR LCD overview

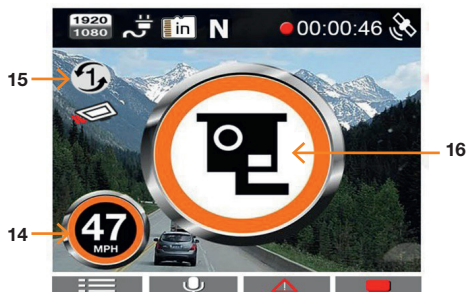
Full speed trap detection view



- Resolution
- Charging status
- SD card status
- GPS Compass direction
- Recording status
- Video timer
- GPS status
- Speed trap alert graphic
- Manual record button
- SOS/Emergency lock recording button
- Microphone on/off button
- Enter Setting menu/change Speed Trap/Video view
- Displays your current speed

Combined speed trap detection and Video recording view.

User tip.
Press the Menu button to switch between these different views.



- Your speed
- Speed trap alert graphic
- Video loop time selected

Product overview

Installation

Insert the 8GB micro SD card in to the SD card slot on the side of the unit and attach the windscreen bracket to the DX20.

Mount your DX20 in a safe and convenient position in the front windscreen where it has an unobstructed view of the road ahead. We recommend mounting it at the top of the windscreen near to the rear view mirror. However remember that you will need to attach the power cable, so find a position where the power cable can be attached to the vehicle's cigarette lighter socket where it will not obstruct, or become a danger to the driver.

Once you have chosen a location, check the windscreen bracket lever is in the unlocked position, press the suction cup bracket to the glass and push the lever to the locked position.

Connecting to power

Attach the small end of the USB cable to the USB power socket on the side of the unit. Attach the other end to the vehicle charger provided. Plug the vehicle charger in to an appropriate cigarette lighter or 12V/24V socket in your vehicle.

Installation tips

Before mounting your DX20, clean the area of the windscreen with a good quality glass cleaner to ensure the suction cup makes a good contact. Remember to mount the unit and install the power cable safely in a location where it does not interfere with the driver or the controls of the vehicle.

Although your DX20 comes as standard with an 8GB micro SD card, it will support up to a 32GB micro SD card if you want to update the card to a larger size. If you do update the SD card, remember to select an SD card which is minimum SDHC Class 6.

It is also possible to 'hard-wire' DX20 and hide the power cables providing a neater installation. Please contact an auto electrician or your local car dealer for further details.

Basic features

Your Aguri Speed Vision DX20 DVR comes as standard with all features set to their optimum settings, however the unit has certain user selectable features you can change to suit your own requirements.

Switching views and entering the Setting menus

You can switch between two different views; full screen speed trap detection mode and a combined view of speed trap detection and video. Use the Menu button to switch between the two different views as well as to enter the Settings menu and the Additional Settings menu.

Power on/off

Your DX20 will power on and start to record automatically as soon as it is connected to power. You can also power it on and off manually. Press the power button for 1 second to power on, press and hold the power button for 2 seconds to power off.

Video/camera mode


You can only take photographs when your DX20 is not recording. To stop the unit recording and switch to camera mode press button #13, the Video Record/OK button. The LCD will now display a 'camera' icon over button #12. To take a photograph whilst in camera mode, press button #12. To switch back to video mode and to start recording video again, press the Video Record/OK button again.

Audible recording (Mic on/off)

When recording video you have a choice of whether you want to have the mic turned on to record audible sounds within your vehicle or to record video only with no sound. To turn the mic on and off press button #11, the Video Playback/Up/Mute button. The Mic icon on the LCD display will change to confirm your selection. To turn the Mic back on, press button #11 again.

Emergency SOS function

If you want to ensure you save and lock a section of video, for example, during an emergency or after an accident, press button #12, the Camera/




Down/SOS button whilst the device is recording. The section of video just recorded will be locked and saved in the Event folder of the SD card so that it will not be deleted or automatically over-written.


Automatic video and event recording.

Your DX20 DVR has been designed to be as simple to use as possible. The purpose of a DVR is to continually record the road ahead and to automatically record and save any incidents or accidents you might be involved in. To ensure that your DX20 does this as efficiently as possible, it will always power up in to video mode and begin recording automatically. Simply connect your DX20 to a power source that comes on when you start the engine of your vehicle, and DX20 will start recording automatically without you having to remember to touch a button.

Video playback on your DX20 DVR.



To review any video recorded directly on your DX20 DVR, stop the video from recording by pressing button #13, the Video Record/OK button and then press button #11, the Video Playback/Up/Mute button. Select either the 'Event' or 'Normal' folder and then use the 'up' and 'down' buttons to find the video file you would like to review and press the 'OK' button to play it.



Press the 'Return' button at any time to exit the menu.

Deleting video files from your DX20 DVR.

To delete one or all of the video files saved to the SD card, press button #10, the Menu/Return file twice to enter the menu and into the 'Delete' function. Select either the 'Event' or 'Normal' folder and use the 'Up' or 'Down' buttons to locate the video file you would like to delete and press 'OK'. Your DX20 DVR will give you the option to delete the file selected or delete all files in that folder.

Use the 'Up' or 'Down' buttons to make your selection and press the 'OK' button to confirm. Press the 'Return' button to exit the menu.

Video playback using the HDMI socket (HDMI cable not included)

Connect your DX20 to your TV or monitor using a suitable HDMI cable. Power on your unit and follow the instructions for 'Video Playback on your DX20 DVR' above

Please note you cannot enter the Video playback mode whilst the video is recording. To stop your DX20 from recording at any time press, the Video Record/OK button, button #13.

Video playback and tracking using Aguri DX20 Viewbox PC companion.

To view video recordings on your PC, install the Aguri DX20 Viewbox PC companion on your PC. The software can be found on the CD ROM supplied or downloaded from www.aguriworld.co.uk

To install from the CD ROM.

Insert the CD in to your PC, open it and double click the Aguri DX20 Viewbox set-up file displayed. Follow the on-screen instructions until the software has been successfully installed.

To install from www.aguriworld.co.uk


Copy and paste this link in to your web browser and download the Aguri DX20 Viewbox set-up software to your PC and follow the on-screen instructions until the software has been successfully installed.

Using the Aguri DX20 Viewbox PC companion.

To view video and GPS track files recorded on your DX20, remove the micro SD card from the DX20 and insert it in to your computer. (Please note that you will need an appropriate micro SD Card reader for this task) Next, launch the Aguri DX20 Viewbox software by double clicking on the Aguri DX20 Viewbox icon that you should now find on the desktop of your PC. The following window will appear:



- | | |
|--|--|
| 1. Distance vehicle travels in each GPS track. | achieves in each GPS track recorded. |
| 2. Browse and open video and GPS track files on your PC. | 10. Average GPS speed of vehicle. |
| 3. Play/Pause a video and GPS file | 11. Expand video to fill screen |
| 4. Stop the video and GPS file currently playing. | 12. Exit Aguri DX20 Viewbox |
| 5. Take a single screen shot from a length of video playing. | 13. Change language |
| 6. Time of recording. | 14. Switch speed unit between Kmh and MPH |
| 7. GPS co-ordinates. | 15. Video footage |
| 8. GPS Speed vehicle travelling in video. | 16. GPS track |
| 9. Maximum speed vehicle | 17. Video/GPS track files opened ready to play |
| | 18. Expand map view to fill screen |
| | 19. Speedometer |



To view a recording and display the GPS track, click on the 'Search Directory' button and browse your computer until you find your DX20 displayed as a 'Removable disc' (You should find it in the 'My Computer' or 'This PC' directory of your PC if connected correctly) Double click on the 'Removable disc' folder and select either 'Event' or 'Normal' and press 'OK' to import the files in to the DX20 Viewbox software. The video/GPS track files recorded will appear in the two data lists at the bottom of the Aguri DX20 Viewbox as indicated above. Highlight the video file you want to run and press the Play button or simply double click the video file you want to review to launch it.

Video recording settings.

If you would like to fine tune any of the settings on your DX20, follow the instructions below.


Enter the Menu by pressing button #10, the Menu/Return button and then press the 'Up' or 'Down' buttons to scroll through the video settings.



Resolution

To change the Resolution, enter the Menu and use the 'Up' or 'Down' buttons until you highlight 'Resolution' and press the 'OK' button to select. Use the 'Up' or 'Down' buttons to choose between 1920*1080P 30fps 16:9 / HDR 1920*1080P 30fps 16:9 / 1280*720 60fps 16:9 or 1280*720 30fps 16:9. Press the 'OK' button to make your selection and return to the menu.

To exit the menu, press the Menu/Return button, button #10.



User tip. The higher the resolution selected the more memory required to save and store lengths of video. If you want to store more video on one SD card, try reducing the resolution.

Recycle Record/Loop recording

You can adjust the length of each loop of video recorded.

To change the Loop time, enter the menu and highlight 'Recycle Record'. Select it by pressing the 'OK' button and use the 'Up' or 'Down' button to choose between 1 minute, 3 minutes, 5 minutes or Off. Press the 'OK'



button to save your selection and return to the menu.

To exit the menu, press the Menu/Return button, button #10.

Image Quality


Use this setting to select the quality of the video or photograph you would like to capture.

Enter the menu and use the up and down buttons to highlight 'Image Quality'. Press 'OK' to select it and use the 'Up' or 'Down' buttons to choose between Super Fine, Fine and Normal. Press the 'OK' button to save your selection and return to the menu.


To exit the menu, press the Menu/Return button, button #10.

Microphone.

Use this setting to switch the microphone on or off.



Enter the menu and use the 'Up' or 'Down' buttons to highlight 'Mic'. Select it by pressing the 'OK' button and use the 'Up' or 'Down' buttons to choose between 'On' or 'Off'. Press the 'OK' button to save your selection and return to the menu.



To exit the menu, press the Menu/Return button, button #10.

Date/Time/Driver ID Stamp

Use this setting to add a date, time and driver ID stamp to all recordings and photographs.

Enter the menu and use the 'Up' or 'Down' buttons to highlight 'Stamp'. Select it by pressing the 'OK' button and use the 'Up', 'Down' and 'OK' buttons to highlight and select the information you would like to 'stamp' on each recording or photograph. Press button #10, the 'Menu/return' button, to exit the 'Stamp' feature and return to the menu.

To exit the menu, press the Menu/Return button, button #10.

User tip: If you want to 'stamp' a 'Driver ID' you will have to first add one to your DX20. Find instructions on how to set the 'Driver ID' further on in this User Guide.

G-Sensor

Your DX20 has a built-in G-Sensor which continually monitors for impact or sudden changes in direction or speed, so it can sense your vehicle has been involved in an incident or accident. If the G-Sensor senses one of these things, your DX20 will automatically save the preceding length of video recorded so that you will have a permanent record of the event.

Your unit comes with the G-Sensor set to Medium sensitivity, which we think is the optimum setting but you can change this if required. To change the G-Sensor sensitivity, enter the additional settings menu by pressing the menu button twice, and use the 'Up' and 'D' buttons to highlight 'G-Sensor'. Select it by pressing the 'OK' button and use the 'Up' and 'Down' button to choose between Off, Hi Medium or Low. Press the 'OK' button to save your selection and return to the menu.

To exit the menu, press the Menu/Return button, button #10.

WB (White balance)

You can adjust the White balance to improve the quality of the video or photograph.

Enter the menu and use the 'Up' or 'Down' buttons to highlight 'WB'. Select it by pressing the 'OK' button and use the 'Up' and 'Down' buttons to choose between Auto, Incandescent, Sunny, Cloudy and Fluorescent. Press the 'OK' button to make your selection a return to the menu.

To exit the menu, press the Menu/Return button, button #10.

EV Bias (Exposure)

You can adjust the exposure you require. For example, during the winter you may want to change the exposure to account for the darker days.

To change the exposure, enter the menu and use the 'Up' and 'Down' buttons to highlight 'EV Bias'. Select it by pressing the 'OK' button and use the 'Up' or 'Down' buttons to choose between +2.0, +5/3, +4/3, +1.0, +2/3, +1/3, +0.0, -1/3, -2/3, -1.0, -4/3, -5/3 and -2.0. Press the Video/Playback/OK button to save your selection and return to the menu.

To exit the menu, press the Menu/Return button, button #10.



Language

You can change the menu language between English / Simple Chinese/ Complicated Chinese/ Russia .

To make your selection, enter the menu and use the 'Up' or 'Down' buttons to highlight 'Language'. Select it by pressing the 'OK' button and use the up or down button to choose the language you require. Press the 'OK' button to save your selection and return to the menu.

To exit the menu, press the Menu/Return button, button #10.

Volume setup

There are three volume settings, High, Middle and Low.

To make your selection, enter the menu and use the 'Up' or 'Down' buttons to highlight 'Volume setup'. Select it by pressing the 'OK' button and use the up or down button to choose the volume level you require. Press the 'OK' button to save your selection and return to the menu.

To exit the menu, press the Menu/Return button, button #10.

Time Setup

It is important to set the date and time, so that any accidents or incidents recorded are saved with the appropriate time and date information attached to them.

To set the date and time, enter the menu and use the 'Up' or 'Down' button to highlight 'Time Setup'. Select it by pressing the 'OK' button and use the 'Up' or 'Down' buttons to change each value and press the 'OK' button to save your selection and move on to the next value. Once you have completed all sections, press the 'OK' button or Menu/Return button to save and exit.



Beep Sound Setting

DX20 will emit a beep each time you press a button. You can switch this beep on or off depending on your preference.

To make your selection, enter the menu and use the 'Up' or 'Down' buttons to highlight 'Beep Sound Setting'. Select it by pressing the 'OK' button and use the 'Up' or 'Down' buttons to choose between Off or On. Press the 'OK' button to save your selection and return to the menu.

To exit the menu, press the Menu/Return button, button #10.

Auto Power Off Setting

If you would like your DX20 to power off when not in use, you can set it to automatically power off after 1, 3 or 5 minutes.

To make your selection, enter the menu and use the 'Up' or 'Down' buttons to highlight 'Auto Power Off Setting'. Select it by pressing the 'OK' button and use the 'Up' or 'Down' buttons to choose between Off, 1 minute, 3 minutes or 5 minutes. Press the 'OK' button to save your selection and return to the menu.

To exit the menu, press the Menu/Return button, button #10.

User tip: If you select 'Off' your DX20 will remain powered on. If you want to use functions such as Motion detection or Parking Mode, you must leave Auto power off set to 'Off'.

Backlight Off

You can control whether you would like the LCD to be on or off whilst you are driving. If you switch it on, it will display what it is recording at all times. If you switch it off, it will display what it is recording for a short period after you first power on your DX20 but will then switch off automatically.

To make your selection, enter the menu and use the 'Up' or 'Down' buttons to highlight 'Backlight off'. Select it by pressing the 'OK' button and use the 'Up' or 'Down' buttons to choose Off or On. Press the 'OK' button to save your selection and return to the menu.

To exit the menu, press the Menu/Return button, button #10.



Card Volume (SD Card capacity)

Use this feature to check the size of the overall memory of the SD card installed, the total amount of the memory used and the amount of memory still available.

Enter the menu and use the 'Up' or 'Down' buttons to highlight 'Card Volume' and select it by pressing the 'OK' button. Information on the SD card installed in your DX20 will be displayed on the LCD. Press 'OK' or the menu/return button to return to the menu.

Driver ID

Use this feature to set-up a Driver ID for your DX20. If added, this Driver ID can be 'stamped' on all photographs and video recorded, together with the date and time if required.

To add a Driver ID, enter the menu and use the 'Up' or 'Down' buttons to highlight 'Driver ID'. Using the keyboard and the 'Up' and 'Down' buttons enter the Driver ID letter by letter until complete. Press 'OK' or the menu/return button to save your Driver ID and return to the menu.



Format (SD card)



If you are adding a new SD card to the device we recommend you format it before use. You can also use this function if you would like to clear and re-set your existing SD card.

To Format an SD card, enter the menu and use the 'Up' and 'Down' buttons to highlight 'Format' and select it by pressing the 'OK' button. Use the 'Up' or 'Down' buttons to choose 'Yes' or 'No' and press 'OK' to make your selection. If you choose to proceed, your DX20 will display one last warning message 'Caution! Delete All?'. Use the 'Up' and 'Down' buttons to make your final selection and press the 'OK' button.

To exit the menu, press the Menu/Return button, button #10.

User tip: Please remember that if you Format an SD card, any data or video recorded and saved to that card will be permanently deleted.

Default Setting

Use this function to return your DX20 to its original default factory settings.

Enter the menu and use the 'Up' and 'Down' buttons to highlight 'Default Setting' and select it by pressing the 'OK' button. Use the 'Up' or 'Down' buttons to choose 'Yes' or 'No' and press 'OK' to make your selection.

To exit the menu, press the Menu/Return button, button #10.

Version Info

Use this feature to check the version number of the software currently installed on your DX20.

Enter the menu and use the 'Up' or 'Down' buttons to highlight 'Version Info' and select it by pressing the 'OK' button. The version number currently installed will be displayed. Press the 'OK' or menu/return button to return to the menu.

To exit the menu, press the Menu/Return button, button #10.

Voice mode

Use this setting to turn the voice alerts on and off.

Enter the additional settings menu by pressing the Menu button twice and use the 'Up' or 'Down' buttons until you highlight 'Voice mode' and press 'OK'. Use the 'Up' or 'Down' buttons to highlight your preferred setting and press 'OK' to make your selection and return to the menu.

To exit the menu, press the Menu/Return button, button #10.

Over speed reminder

Use this function if you would like your DX20 to alert you if you exceed the speed limit you select.

Enter the additional settings menu by pressing the Menu button twice and use the 'Up' or 'Down' buttons until you highlight 'Overspeed remind' and press 'OK'. Next, use the 'Up' or 'Down' buttons to highlight your preferred setting and press 'OK' to make your selection and return to the menu.

To exit the menu, press the Menu/Return button, button #10



Driving time warning

Use this function to alert you after you have been driving for a pre-selected time.

Enter the additional settings menu by pressing the Menu button twice and use the 'Up' or 'Down' buttons until you highlight 'Driving time warning' and press 'OK'. Next, use the 'Up' or 'Down' buttons to highlight your preferred setting and press 'OK' to make your selection and return to the menu.

To exit the menu, press the Menu/Return button, button #10

Speed unit

Use this setting to switch your DX20 between KMH and MPH

Enter the additional settings menu by pressing the Menu button twice and use the 'Up' or 'Down' buttons until you highlight 'Speed unit' and press 'OK'. Next, use the 'Up' or 'Down' buttons to highlight your preferred setting and press 'OK' to make your selection and return to the menu.

To exit the menu, press the Menu/Return button, button #10

Speed trap alerts

Use this setting to switch GPS speed trap alerts on or off.

Enter the additional settings menu by pressing the Menu button twice and use the 'Up' or 'Down' buttons until you highlight 'Speed unit' and press 'OK'. Next, use the 'Up' or 'Down' buttons to highlight your preferred setting and press 'OK' to make your selection and return to the menu.

To exit the menu, press the Menu/Return button, button #10





Red light camera

Use this setting to switch Red light camera alerts on or off.

Enter the additional settings menu by pressing the Menu button twice and use the 'Up' or 'Down' buttons until you highlight 'Red light camera' and press 'OK'. Next, use the 'Up' or 'Down' buttons to highlight your preferred setting and press 'OK' to make your selection and return to the menu.

To exit the menu, press the Menu/Return button, button #10

Mobile speed trap alert

Use this setting to switch Mobile speed trap alerts on or off.

Enter the additional settings menu by pressing the Menu button twice and use the 'Up' or 'Down' buttons until you highlight 'Mobile speed trap alert' and press 'OK'. Next, use the 'Up' or 'Down' buttons to highlight your preferred setting and press 'OK' to make your selection and return to the menu.

To exit the menu, press the Menu/Return button, button #10

Park Mode (To be used if unit is not connected to a permanent 5V power source when vehicle parked)

If Park Mode is switched on, your DX20 will power off during periods of inactivity but as soon as any movement is sensed ie there is an impact to your vehicle, it will power up and record for a period of approximately 20 seconds.

To switch Park Mode on or off, enter the additional settings menu by pressing the Menu button twice and use the 'Up' or 'Down' buttons to highlight 'Park Mode'. Select it by pressing the 'OK' button and use the 'Up' or 'Down' buttons to choose between 'On' or 'Off'. Press the 'OK' button to save your selection and return to the menu.

To exit the menu, press the Menu/Return button, button #10.

User tip: If you turn off Park Mode your DX20 will continue to record everything in front of it as long as it remains powered on with no breaks in the recording.



Park Mode (To be used if unit is not connected to a permanent 5V power source when vehicle parked)

If you have connected your DX20 to a power feed that stays live at all times or have 'hard wired' it, it will automatically switch to Auto Park Mode after approximately 15 minutes of inactivity. As long as your DX20 remains connected to a permanent power source, it will switch to standby mode to conserve power when your vehicle is parked and not in use, but if it senses any movement or impact, it will automatically power on and record for approximately 20 seconds.

Please note that your DX20 will switch to this mode automatically whether you have the Park Mode setting in the menu switched on or off.

Camera operation

Your Aguri DX20 DVR has been designed primarily to function as a DVR, to record the road ahead and to save any incidents or accidents you may be involved in. However, in addition to the DVR function, your DX20 can also be used to take still photographs.

DX20 will always power up in Video mode and start recording automatically, so to switch to Camera mode, press button #13, the Video Record/OK button, to stop Video recording.

To take a picture, simply line up the object you want to capture using the LCD and press the Camera mode button, button #12, once.

To return to video and start recording press button #13, the Video Record/OK button, again.

How do I update the speed trap database and software on my DX20 DVR dash cam?

Speed trap database and software updates can be found on our website. Please go to www.aguriworld.co.uk and scroll to the bottom of any page and click on the 'Software updates' button. Scroll down the list of software updates available and click on the download link for 'DX20 Speed trap and software updates.'

Once you have downloaded the software to your PC, remove the SD card from the DX20 and insert it to your computer using a suitable SD card reader. Next open the SD card so you can see the files already on it and then 'drag' or 'copy and paste' the new DX20 software updater files from your PC on to the SD card.

Please note that you should have downloaded two new DX20 software updater files called 'edogdata.dat' and 'firmware.bin'

Once you have copied the two files to the SD card, safely remove the SD card from your computer and re-insert it in to your DX20. The device will update in two stages. First it will update the system software, then it will update the speed trap database.

Power on the unit which will display the message 'Firmware update?' together with a 'tick' and a 'cross'. Use the up or down buttons to highlight the 'tick' and press OK to start the update. The DX20 will then automatically update whilst the screen keeps you up-to-date with it's progress. Once the update is complete the screen will go blank. Next, press the power button again and the unit will display the message 'Edog data update?' (speed trap database update) together with a 'tick' and a 'cross'. Use the up or down buttons to highlight the 'tick' and press OK to start the update. The DX20 will then automatically update whilst the screen keeps you up-to-date with it's progress. Once the update is complete the screen will go blank.

The update is now complete and your DX20 ready to use again.

Technical Specification

Display	2.0 inch TFT LCD monitor
Lens	150 degree wide viewing angle and 6 layer all glass lens. TTL:21~22mm
Languages	English / Simple Chinese/ Complicated Chinese/ Russia
Video Format	.MOV
Video Resolution	1920x1080P 30fps 16:9 HDR 1920x1080P 30fps 16:9 1280x720 60fps 16:9 1280x720 30fps 16:9
Motion Detection	ON/OFF
Audio Recording	ON/OFF
Image Resolution	4M Pixels
Image Format	JPEG
Memory Card	Supports Micro SD card up to 64GB
MIC/Speaker	Built-in
Backlight Off	ON/OFF
Auto Power Off	OFF/1 Minute/3 Minutes/5 Minutes
USB Port	USB2.0
Battery Capacity	250MAH 3C
Aguri ViewBox PC software	Windows XP2/Vista/Windows 7/ Windows 8

Disposal of Old Electrical & Electronic Equipment - applicable in the European Union.



If you see this symbol on a product or its packaging, it indicates that the product should not be treated as normal household waste. If you see this symbol on any product or packaging it should be handed over to an applicable collection point for the recycling of electrical equipment.

By ensuring that this product is disposed of correctly you will help prevent a potentially negative impact on the environment. In addition the recycling of materials will help to conserve natural resources. For further

information about recycling please contact your local civic office or recycling centre.

Warranty

Please note that to receive technical support or service under warranty, you must first register your unit at www.aguriworld.co.uk

Having a problem with your Aguri Speed Vision DX20 DVR?

Try visiting the FAQ section at www.aguriworld.co.uk. We find that most issues can be resolved there.

If you are still experiencing problems, your Aguri Speed Vision DX20 DVR comes with a standard 12 month warranty. To return your unit under warranty please ship it in suitable protective packaging, using Special Delivery or an alternative insured delivery service to:-

Warranty Department Aguri Limited

Unit 2
Praed Road
Manchester
M17 1PQ

Please enclose the following information:

- (a) Your name, address and a full description of the problem.
- (b) A telephone number where you can be reached during business hours.
- (c) Your units' serial number.
- (d) A copy of your proof of purchase.

Please note that the warranty will be considered void if the product:

Has been dropped or otherwise obviously mistreated.

Has been subjected to heat, moisture or damp conditions.

Has been opened or dismantled.

Has been charged or powered with any cable or charger other than the one supplied.

www.aguriworld.co.uk